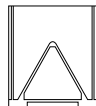


## HAVER & BOECKER

**IBAU HAMBURG**

**STORAGE + HANDLING**



Phone: +49 (0) 40 361309-0  
E-mail: [info@ibauhamburg.de](mailto:info@ibauhamburg.de)

**sommer**

**MIXING**



Phone: +49 (0) 211-230 82-32  
E-mail: [info@sommer-anlagenbau.com](mailto:info@sommer-anlagenbau.com)

**HAVER & BOECKER**

**PACKING**



Phone: +49 (0) 2522 30-0  
E-mail: [haver@haverboecker.com](mailto:haver@haverboecker.com)

**BEHN+BATES**

**PACKING**



Phone: +49 (0) 251 9796-0  
E-mail: [sales@behn Bates.com](mailto:sales@behn Bates.com)

**AVENTUS**

**PACKING**

Phone: +49 (0) 2581 4591-1139  
E-mail: [info@aventus.global](mailto:info@aventus.global)

**NEWTEC BAG  
PALLETIZING**

**PALLETIZING+ LOADING**



Phone: +33 389 633750  
E-mail: [info@newtec bag.com](mailto:info@newtec bag.com)

**Feige FILLING GmbH**  
Rögen 6a  
D-23843 Bad Oldesloe  
Germany  
Phone: +49 4531 8909 0  
E-mail: [info@feige.com](mailto:info@feige.com)  
Internet: [www.feige.com](http://www.feige.com)



**Feige**  
FILLING

## Drum filling equipment ELEMENTRA® 29



## ELEMENTRA® 29 for high-viscosity products

The servo technology of the **ELEMENTRA® 29** (FEIGE e-Power) makes it possible to adapt the entire lifting process during filling to the respective product via control-related parameters.

Thanks to extensive peripherals, the semi-automatic system meets the special requirements of the filling products and the respective environment.

The new touch panel including the FEIGE web HMI offers an intuitive design for high operating comfort.

### 1 Electric lifting unit

- Servodrive **e-POWER**
- Automatic positioning when changing container
- Saving expensive energy (compressed air)
- Exhaust-free use also in clean rooms
- With-surface filling possible



### 2 Electric base height adjustment

- Automatic positioning when changing container
- Saving expensive energy (compressed air)
- Exhaust-free use also in clean rooms
- Ergonomic handling for the operator

### 3 Electric opening cylinder

- Continuous product flow control
- Filling lance wear detection
- Low maintenance, longer service life
- Numerous settings, easy to implement

### 4 Electrically driven drum roller conveyor

- Automatic drum positioning via light barrier
- All rollers with chains and gear motors driven
- Ergonomic further transport of filled drums

### 5 WEB HMI

- Alarm-related help texts with photos, videos and comment function
- Intuitive design for high operating comfort
- Improved usability increases the productivity of the personnel
- 15,6" multi touch screen
- Full HD display
- Comprehensive management of recipes and orders
- FDA-compliant user administration
- Logbook (optional)
- Web-based system

### 6 Fill level and status indication

- Interactive operation by means of LED stripes included in the control cabinet door, informing the operator of every machine status
- Weight-controlled fill level indication

### 1 Electric lifting unit



### 2 Electric base height adjustment



### 3 Electric opening cylinder



### 6 Fill level and status indication



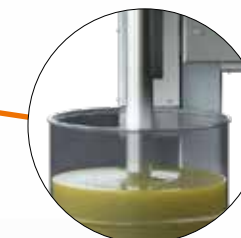
### 5 WEB HMI



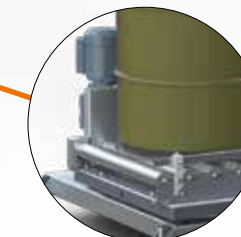
### 7 8 Stainless steel / acid protection coating



### 9 With-surface filling



### 4 Electrically driven drum roller conveyor



### 7 Large control cabinet

- High flexibility due to standardized machine control
- Control up to five drive units

### 8 Stainless steel / acid protection coating

- Design elements at the control cabinet made of stainless steel with high-quality acid protection coating

### 9 With-surface filling

- The valve tip has a „thread-cutting“ effect, therefore suitable for high-viscosity or sticky filling products
- Continuous upward movement of the filling valve without breaking the product flow
- Upward movement with the product level without immersing or preceding

